

IDS 20 D

EN

OPERATING MANUAL



TROTEC

Table of Contents

| | |
|---|-----|
| 1. Notes on how to use the manual..... | B-1 |
| Legend | B-1 |
| 2. Scope of delivery..... | B-1 |
| 3. Guarantee provisions..... | B-1 |
| 4. General safety instructions | B-2 |
| 5. Function and product characteristics | B-2 |
| 6. Technical data | B-2 |
| Fuels | B-3 |
| 7. Proper and improper use | B-3 |
| Proper use | B-3 |
| Improper use | B-3 |
| 8. Installation conditions..... | B-3 |
| 9. Description of device | B-3 |
| Oil heating unit | B-3 |
| Control panel | B-3 |
| 10. Installation and commissioning..... | B-4 |
| 11. Functions and operation | B-4 |
| Switching on the oil heating unit | B-4 |
| Switching off the oil heating unit | B-4 |
| Resuming operation after a failure | B-4 |
| Safety equipment | B-4 |
| 12. Transport..... | B-5 |
| 13. Care and maintenance..... | B-5 |
| Cleaning after every 50 operating hours. | B-5 |
| Cleaning the oil heating unit. | B-5 |
| 14. Disposal | B-5 |
| Oil heating unit | B-5 |
| Heating oil | B-5 |
| Packaging | B-5 |
| 16. Troubleshooting | B-6 |
| 15. Service and repair | B-6 |
| 17. Appendix..... | B-8 |
| Circuit diagram | B-8 |

1. Notes on how to use the manual

This operating manual contains all important information required for a safe commissioning and use of your oil heating unit.

It provides you with support for operating the device and remedying possible problems as well as with information on disposal and customer service.

Please read this manual thoroughly and completely before using the oil heating unit for the first time.

Please store this operating manual and keep it within reach in order to consult it if necessary.

Please observe all safety instructions and information on use and maintenance contained in this manual.

This manual should be attached to the device if the latter is made available to other persons for use.

Legend



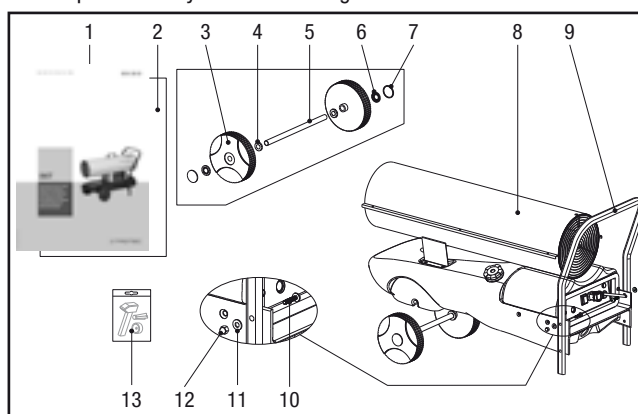
WARNING SYMBOL. This symbol is followed by a hazard warning which contains instructions whose non-compliance may cause serious injuries and/or death and/or property damage.



Additional information which might be helpful when using the device.

2. Scope of delivery

The scope of delivery of the oil heating unit includes:



- 1 Operating manual
- 2 Assembly instruction manual
- 3 Wheel 2x
- 4 Washer 2x
- 5 Axis
- 6 Snap ring 2x
- 7 Wheel cover 2x

- 8 Oil heating unit
- 9 Support/handle
- 10 Screw 2x
- 11 Washer 2x
- 12 Cap nut 2x
- 13 Assembly tools

3. Guarantee provisions

The warranty period granted for the oil heating unit IDS 20 D shall be 12 months.

Any damage to the device resulting from non-compliance with the instructions contained in this manual shall be excluded from the guarantee.

The manufacturer shall assume no liability for damages to the device and/or its accessories that are caused by unauthorised modifications.

For any further terms of guarantee, please refer to the General Terms and Conditions (GTC), which are available on our website: www.trotec.de.

4. General safety instructions



Please observe the following safety instructions! Any non-compliance with these instructions may have serious consequences for the health of persons and could result in property damage and damage to the environment.

Risk of explosion!

- Do not operate the device in potentially flammable or explosive environments. Do not install it in such environments, either.
- Do not place the device on a flammable surface.
- Remove any inflammable materials and chemicals from the immediate operating environment.

Functional impairment of and damage to the device!

- Do not use the device outdoors.
- Install the device in a stable position.
- Keep the intake and exhaust openings free.
- Do not cover the device during operation.
- Only disconnect the device from the mains once it has cooled down completely.
- Do not use any chemicals for cleaning the device.

Risk of injury and damage to property due to defective devices!

- Before each use of the device, check its accessories and connection parts for possible damages. Do not use any defective devices or device parts.
- Do not use the device if you detect any damage to its plug and cables. Defective power cables represent a serious health threat.

Danger to life through electrical shock!

- Only connect the device to power sources that are in good technical order. Do not use damaged wall outlets!
- Pull the connection cable out of the wall outlet by pulling it at its plug.
- Do not touch electrical connection cables when your hands are wet!
- Protect the electrical connection cables against damage caused by, for example, animals.
- Do not carry out any changes or repairs on the device!
- Do not expose the device to any liquids.
- Do not apply any liquids to the interior of the device. If this does happen nevertheless, pull out the power cord and have the device checked by a specialist workshop.

Risk of injury!

- Do not insert any objects into the intake and exhaust opening of the device.
- Do not reach into the existing openings.
- Do not leave children or animals unattended near the operating device!
- Do not operate the device in rooms with insufficient supply of combustion air.

- Avoid the improper use of fuels.

Risk of environmental pollution!

- Do not let any leaked fuel seep away into the soil and prevent it from entering the sewer system.

5. Function and product characteristics

The oil heating unit IDS 20 D is used to heat up room air in order to achieve a fast heating of well ventilated rooms.

The oil heating unit is operated with heating oil. The device features an indirect combustion. This means that the warm air and the combustion gases are released into the surrounding area.

A selection of two operating modes ensures that the oil heating unit can be controlled both manually by the user as well as automatically with the support of the thermostat.

6. Technical data

| | Type IDS 20 D |
|--|--------------------|
| Parameter | Value |
| Article number | 1.430.000.020 |
| Electrical connection | 230 V |
| Frequency | 50 Hz |
| Nominal current max. | 1 A |
| Power consumption | 200 W |
| Air volume | 350 m³/h |
| Fan | Axial fan |
| Nominal heat load max. | 20 kW |
| Nominal heat output | - |
| Temperature increase ΔT ¹⁾ | - |
| Oil consumption max. | 2.04 l/h |
| Tank capacity | 17 l |
| Air transportation hose connection ²⁾ | - |
| Chimney connection | - |
| Thermostat connection | series |
| Combustion | direct |
| Nozzle | 0.40-80° S (gal/h) |
| Pump pressure | 12 bar |
| Sound pressure level (at distance of 1 m) | 67 dB (A) |
| Length | 720 mm |
| Width | 300 mm |
| Height | 450 mm |
| Weight | 20 kg |

¹⁾ indicates the temperature increase. ΔT + ambient temperature = exhaust air temperature

²⁾ optional

Fuels

The following fuels have been approved for use with the oil heating unit IDS 20 D: heating oil EL, diesel

7. Proper and improper use

Proper use

The oil heating unit IDS 20 has been developed for the generation of hot air and may be used indoors and in roofed outdoor areas.

The device can be used for heating well ventilated rooms such as cowsheds or winter construction sites and for deicing machines or pipelines. Any application deviating from the above-mentioned use is deemed inadmissible!

Improper use

The device may not be installed or operated in potentially inflammable and explosive rooms or areas.

The device may not be used in rooms with an insufficient supply of combustion air.

8. Installation conditions

When choosing the installation location of the oil heating unit, a number of spatial and technical conditions must be taken into account. Any non-compliance may impair the functioning of the device and/or of the accessories or result in hazardous situations for people and property.

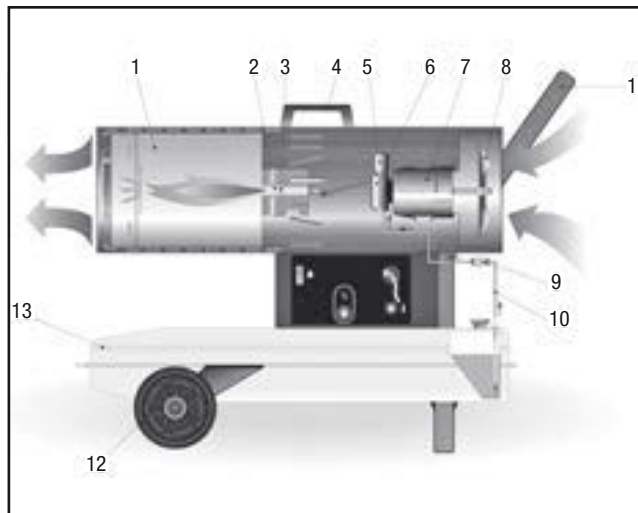
The following points are to be observed during installation:

- The device may be operated indoors and in roofed outdoor areas.
- The device must be installed in a stable position and placed on a fireproof surface.
- The device must be connected to a properly secured mains socket.
- The installation room of the device must be sufficiently ventilated.
- The minimum distance of the device to inflammable materials must be at least 2 m.
- The intake and exhaust openings must not be covered.
- There may be no walls or large objects near the device.
- Sufficient fire protection measures must be taken.

9. Description of device

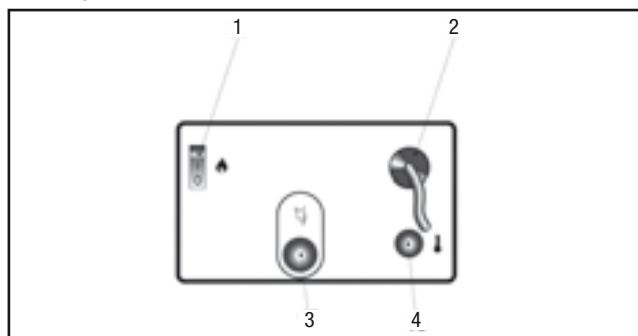
The oil heating unit IDS 20 D consists of the following components:

Oil heating unit



- | | |
|----------------------|------------------------|
| 1 Combustion chamber | 8 Fan |
| 2 Burner | 9 Heating oil filter |
| 3 Nozzle | 10 Heating oil circuit |
| 4 Handle | 11 Support/handle |
| 5 Solenoid valve | 12 Wheel |
| 6 Pump | 13 Tank |
| 7 Motor | |

Control panel



- | | |
|-------------------------|------------------------------------|
| 1 Power switch (On/Off) | 3 Reset button with indicator lamp |
| 2 Power supply cable | 4 Thermostat socket (optional) |

10. Installation and commissioning

- Check that the scope of delivery of your oil heating unit is complete. If an accessory part is missing, please contact the Trotec customer service or the specialist dealer from whom you purchased the device.
- Check the oil heating unit and its connection parts for possible damages.
- Mount the support/the handle and the wheels to the oil heating unit. Please refer to the supplied assembly instruction manual for further information. Please use the supplied assembly tools.
- Make sure to comply with the requirements described in the chapter "Installation conditions".
- Fill the heating oil into the tank with the device switched off and cooled down.
- Inspect the device prior to commissioning and check it regularly for its proper condition during operation.
- Make sure that the characteristics of the mains supply correspond to those indicated on the rating plate.
- Each time before switching on the device, make sure that the fan can move freely before plugging the power plug into the mains socket.
- Connect the power supply cable to a properly secured mains socket (230 V / 50 Hz / 10 A). On construction sites, a residual current circuit breaker must be connected upstream of the mains socket according to VDE 0100/0105.

The oil heating unit is now ready for operation. Use the device according to the functions described in chapter 11 "Functions and operation".

11. Functions and operation

The device may only be used by persons who have been trained in operating the device.

Switching on the oil heating unit

The oil heating unit features two operating modes:

1. Manual mode

The generator can operate in manual mode.

- Switch the device on by setting the power switch (On/Off) to the position "🔥".

The fan starts running and the combustion starts after a few seconds.

2. Automatic mode

The oil heating unit can only operate in automatic mode if a control device (optional) is connected to it, e.g. a thermostat. The thermostat is to be connected to the thermostat socket (optional).

- Remove the lid of the cable guide and connect the thermostat "1" using a cable coupler as shown in the circuit diagram. In this regard, please observe the instructions supplied with the thermostat.

- Prepare the device for operation via the settings of the control device (e.g. by setting the thermostat to the maximum temperature).
- Switch the device on by setting the power switch (On/Off) to the position "🔥".

Switching off the oil heating unit

- Switch the device off by setting the power switch (On/Off) to the position "0".
- If you are using a thermostat, switch the device off via the settings of the control device (e.g. by setting the thermostat to a low temperature).

The flame is extinguished and the fan will continue running in order to completely cool down the burner.



Damage to the device due to overheating!

Do not switch off the device by pulling out the power cord. This may cause the device to overheat.

Switch the device off properly. Only disconnect the power plug if the fan motor has come to a complete standstill.

- Wait until the automatic aftercooling has been completed.
- Secure the device against being accidentally switched on again by pulling out the power cord.

Resuming operation after a failure

During the initial commissioning of the device or after the heating oil circuit has been completely emptied, the inflow of heating oil to the nozzle may be insufficient. This will cause the flame control system to be activated and the device will be blocked.

- Wait for approx. 1 minute.
- Switch the device off.
- Switch the device on again.

If the device is still not starting up:

- Make sure that there is enough heating oil in the tank.
- Switch the device off.
- Switch the device on again.

In order to determine the cause of the fault:

- see chapter "Troubleshooting"

If there is no heating oil left in the tank:

The device will switch off automatically if the heating oil has been used up. The indicator lamp of the reset button lights up red.

- Fill the heating oil into the tank with the device switched off and cooled down.
- Press the reset button.
- Switch on the device.

In order to completely fill and ventilate the heating oil circuit, two or more restart attempts may be required.

Safety equipment

The oil heating unit features an electronic flame monitoring system. In the event of malfunctions, the safety shutdown is activated and indicated via the control lamp of the reset button.

The indicator lamp starts flashing if the operation is interrupted due to considerable mains fluctuations; the operation is automatically resumed if the voltage has stabilised.

If the safety shutdown has been triggered:

- Determine and remove the cause of the fault before commissioning the oil heating unit again (see chapter "Troubleshooting").
- Switch on the device.

12. Transport

- Switch the device off as described in the chapter "Functions and operation".
- Wait until the device has cooled down completely.
- Before transporting or adjusting the device, check if the tank cap is tightly closed.



Risk of environmental pollution!

Heating oil may leak during transport or handling of the device. The filling plug of the tank cap does not guarantee tightness in order to allow air to be introduced and the tank to be emptied during operation.

Only transport or shift the device with the tank cap tightly closed.

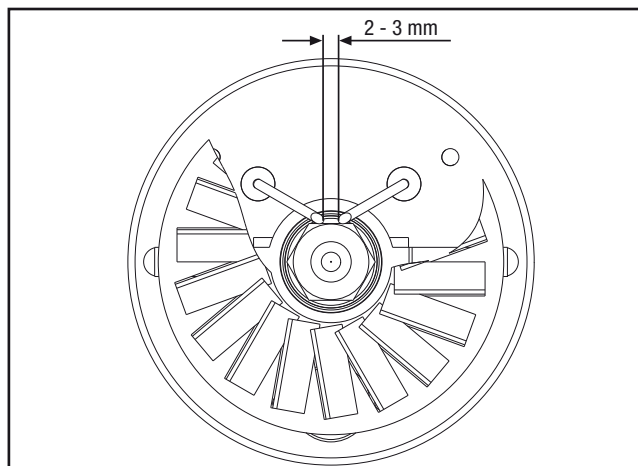
13. Care and maintenance

In order to ensure a trouble-free operation of the device, the combustion chamber, the burner and the fan are to be cleaned regularly.

- Switch the device off as described in the chapter "Functions and operation".
- Wait until the device has cooled down completely.

Cleaning after every 50 operating hours

- Dismount the heating oil filter. Remove the filter insert and clean it using clean heating oil.
- Dismount the upper housing part and clean the inner part as well as the fan blades using a cleaning fleece and a brass brush if it is heavily soiled.
- Check the condition of all cables and high-voltage connections.
- Dismount the burner and clean its components using a brass brush.
- Clean the electrodes. Check the distance of the electrodes and adjust it if required (see figure).



- Have the combustion chamber cleaned by the customer service.
- Mount the components in the reverse order.
- Have the exhaust gas values of the burner checked regularly.

Cleaning the oil heating unit

- Wipe the exterior of the device using a wet cloth. The painted and plastic surfaces may not be scoured. Do not use any solvent-based cleaning agents.

14. Disposal

The heating oil must be drained from the tank of the oil heating unit and collected.

Oil heating unit

Electronic equipment may not be disposed of in the domestic waste, but must be correctly disposed of in accordance with the EUROPEAN PARLIAMENT directive 2002/96/EC of 27th January 2003 regarding used electrical and electronic equipment. Please dispose of this device according to the applicable legal regulations after its final decommissioning.

Heating oil

Fuels must be disposed of according to the local regulations.

Packaging

The packaging of the oil heating unit consists of cardboard/paper and plastic. The materials must be disposed of in the designated containers according to the local regulations or at a recycling depot.

15. Service and repair

Before contacting our customer service in order to solve an existing technical problem, please try removing the error by following the instructions described in the chapter "Troubleshooting".

If you have any further questions regarding the functioning and operation of the oil cleaning unit or if you wish to receive further information in the event of a claim or with regard to guarantee aspects, please do not hesitate to contact us at any time.

Please contact:

Trotec GmbH Co KG

Grebbeener Straße 7

D-52525 Heinsberg

Tel.: 49 (0) 2452 / 962 - 400

Fax.: 49 (0) 2452 / 962 - 200

Email: info@trotec.de

www.trotec.de.

16. Troubleshooting



Danger to life due to improper repair!

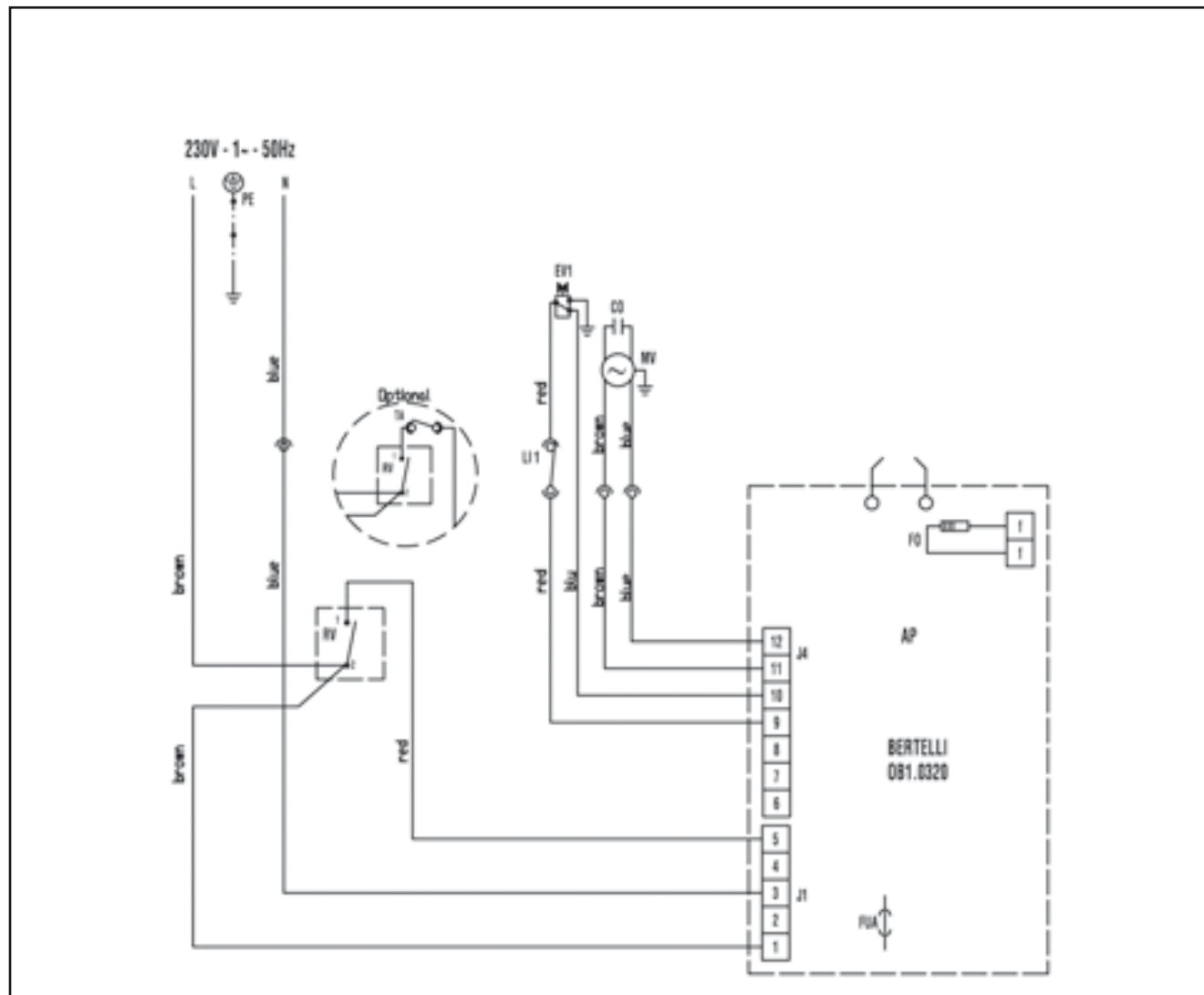
Do not attempt to carry out modifications or repairs on the device. Any unauthorised modification may result in serious injuries or even death. Have repairs carried out by a certified specialist workshop.

| Problem | Cause | Error correction |
|--|--|---|
| Fan does not start running and flame is not ignited | Control device is incorrectly set | - Check if the control equipment is correctly set (e.g. the temperature set at the thermostat must be higher than the room temperature). |
| | Control device defective | - Have the control device replaced by the customer service. |
| | no power supply | - Check the characteristics of the electrical system (230 V - 1 ~ - 50 Hz). - Check the function and position of the selector switch. - Check if the fuse is intact. |
| | Motor winding interrupted or blown | - Have the motor replaced by the customer service. |
| | Motor bearing blocked | - Have the motor bearing replaced by the customer service. |
| | Motor capacitor blown | - Have the motor capacitor replaced by the customer service. |
| Fan does not start running and flame is not ignited or stops burning | no ignition | - Check the connections of the ignition cables to the electrodes and the transformer. - Check the position and the distance of the electrodes. - Check if the electrodes are clean. - Have the transformer replaced by the customer service. |
| | Flame control system defective | - Have the flame control equipment replaced by the customer service. |
| | Photoelectric cell defective | - Have the photoelectric cell cleaned or replaced by the customer service. |
| | Burner is not or only insufficiently supplied with heating oil | Contact the customer service in order to: - have the integrity of the coupling between the pump and motor checked. - have the heating oil circuit checked for air that may have entered the circuit and to have the tightness of the lines and filter seal checked. - have the nozzle cleaned or replaced. |
| | Solenoid valve defective | Contact the customer service in order to: - have the electrical connections checked. - have the solenoid valve cleaned or replaced. |

| Problem | Cause | Error correction |
|---|---|---|
| Fan starts running and flame burns with smoke formation | insufficient supply of combustion air | <ul style="list-style-type: none"> - Remove all obstacles or blockages from the intake and/or exhaust openings. - Have the position of the air setting ring checked by the customer service. - Have the support disc of the burner cleaned by the customer service |
| | Supply of combustion air too high | <ul style="list-style-type: none"> - Have the position of the air setting ring checked by the customer service. |
| | used heating oil contaminated and/or containing water | <ul style="list-style-type: none"> - Replace used heating oil with clean heating oil. - Clean the heating oil filter. |
| | air has entered the heating oil circuit | <ul style="list-style-type: none"> - Have the tightness of the lines and heating oil filter checked by the customer service |
| | insufficient heating oil quantity at the burner | Contact the customer service in order to: <ul style="list-style-type: none"> - have the pump pressure value checked. - have the nozzle cleaned or replaced. |
| | too much heating oil at the burner | Contact the customer service in order to: <ul style="list-style-type: none"> - have the pump pressure value checked. - have the nozzle replaced. |
| Device does not switch off | Solenoid valve seal defective | <ul style="list-style-type: none"> - Have the solenoid valve replaced by the customer service. |

17. Appendix

Circuit diagram



AP Control unit
 TA Thermostat connection (optional)
 LI 1 Safety thermostat
 EV 1 Solenoid valve
 FO Photoelectric cell

CO Capacitor
 MV Fan motor
 FUA Fuse
 RV Power switch (On/Off)

Trotec GmbH & Co. KG

Grebbeener Str. 7
D-52525 Heinsberg

📞 +49 2452 962-400

📠 +49 2452 962-200

info@trotec.com
www.trotec.com