

EN

OPERATING MANUAL
OIL HEATER



Table of Contents

1. Notes on how to use the manual.....	A-1
Legend	A-1
2. Scope of delivery.....	A-1
3. Guarantee provisions.....	A-1
4. General safety instructions.....	A-2
5. Function and product characteristics.....	A-2
6. Technical data.....	A-2
Fuels	A-3
7. Proper and improper use.....	A-3
proper use	A-3
improper use	A-3
8. Installation conditions.....	A-3
9. Description of device.....	A-3
Oil heating unit	A-3
Control panel	A-3
10. Installation and commissioning.....	A-4
11. Exhaust system.....	A-4
Chimney duct.....	A-4
Wall duct.....	A-4
12. Functions and operation.....	A-4
Switching on the oil heating unit	A-4
Switching off the oil heating unit	A-5
Resuming operation after a failure	A-5
Safety equipment.....	A-5
13. Transport.....	A-5
14. Care and maintenance.....	A-6
Cleaning after every 50 operating hours	A-6
Cleaning the oil heating unit.....	A-6
15. Disposal.....	A-6
Oil heating unit	A-6
Heating oil.....	A-6
Packaging	A-6
16. Service and repair.....	A-6
17. Troubleshooting.....	A-6
18. Appendix.....	A-9
Circuit diagram	A-9

1. Notes on how to use the manual

This operating manual contains all important information required for a safe commissioning and use of your oil heating unit.

It provides you with support for operating the device and remedying possible problems as well as with information on disposal and customer service.

Please read this manual thoroughly and completely before using the oil heating unit for the first time.

Please store this operating manual and keep it within reach in order to consult it if necessary.

Please observe all safety instructions and information on use and maintenance contained in this manual.

This manual should be attached to the device if the latter is made available to other persons for use.

Legend



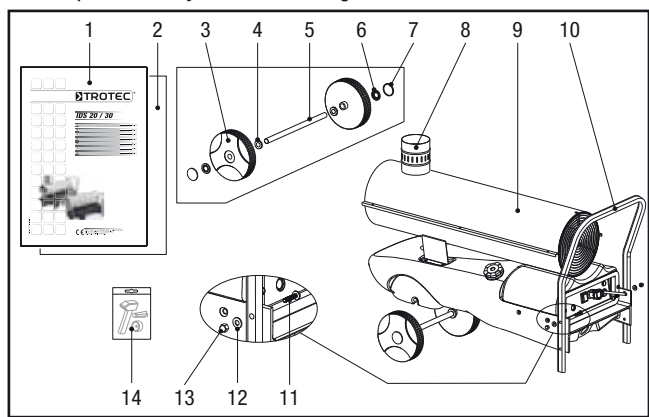
WARNING SYMBOL. This symbol is followed by a hazard warning which contains instructions whose non-compliance may cause serious injuries and/or death and/or property damage.



Additional information which might be helpful when using the device.

2. Scope of delivery

The scope of delivery of the oil heating unit includes:



- | | |
|------------------------------------|-------------------------------------|
| 1 Operating manual | 9 Oil heating unit ISD 20 or ISD 30 |
| 2 Assembly instruction manual | 10 Support/handle |
| 3 Wheel 2x | 11 Screw 2x |
| 4 Washer 2x | 12 Washer 2x |
| 5 Axis | 13 Cap nut 2x |
| 6 Snap ring 2x | 14 Assembly tools |
| 7 Wheel cover 2x | |
| 8 Chimney connection
120/150 mm | |

3. Guarantee provisions

The warranty period granted for the oil heating unit ISD 20 and/or ISD 30 shall be 12 months.

Any damage to the device resulting from non-compliance with the instructions contained in this manual shall be excluded from the guarantee.

The manufacturer shall assume no liability for damages to the device and/or its accessories that are caused by unauthorised modifications.

For any further terms of guarantee, please refer to the General Terms and Conditions (GTC), which are available on our website: www.trotec.de.

4. General safety instructions



Please observe the following safety instructions! Any non-compliance with these instructions may have serious consequences for the health of persons and could result in property damage and damage to the environment.

Risk of explosion!

- Do not operate the device in potentially flammable or explosive environments. Do not install it in such environments either.
- Do not place the device on a flammable surface.
- Remove any inflammable materials and chemicals from the immediate operating environment.

Functional impairment of and damage to the device!

- Do not use the device outdoors.
- Install the device in a stable position.
- Keep the intake and exhaust openings free.
- Do not cover the device during operation.
- Only disconnect the device from the mains once it has cooled down completely.
- Do not use any chemicals for cleaning the device.

Risk of injury and damage to property due to defective devices!

- Before each use of the device, check its accessories and connection parts for possible damages. Do not use any defective devices or device parts.
- Do not use the device if you detect any damage to its plug and cables. Defective power cables represent a serious health threat.

Danger to life through electrical shock!

- Only connect the device to power sources that are in good technical order. Do not use damaged wall outlets!
- Pull the connection cable out of the wall outlet by pulling it at its plug.
- Do not touch electrical connection cables when your hands are wet!
- Protect the electrical connection cables against damage caused by, for example, animals.
- Do not carry out any changes or repairs on the device!
- Do not expose the device to any liquids.
- Do not apply any liquids to the interior of the device. If this does happen nevertheless, pull out the power cord and have the device checked by a specialist workshop.

Risk of injury!

- Do not insert any objects into the intake and exhaust opening of the device.
- Do not reach into the existing openings.
- Do not leave children or animals unattended near the operating device!
- Do not operate the device in rooms with insufficient supply of combustion air.
- Avoid the improper use of fuels.

Risk of environmental pollution!

- Do not let any leaked fuel seep away into the soil and prevent it from entering the sewer system.

5. Function and product characteristics

The oil heating unit IDS 20 and/or IDS 30 is used to heat up room air in order to achieve a fast heating of large rooms.

The oil heating unit is operated with heating oil. The device features an indirect combustion and is provided with an exhaust connection in order to discharge the exhaust gas via the chimney.

A selection of two operating modes ensures that the oil heating unit can be controlled both manually by the user as well as automatically with the support of the thermostat.

6. Technical data

	Type IDS 20	Type IDS 30
Parameter	Value	Value
Article number	1.430.000.120	1.430.000.125
Electrical connection	230 V	230 V
Frequency	50 Hz	50 Hz
Nominal current max.	1.25 A	1.56 A
Power consumption	300 W	370 W
Air volume	550 m ³ /h	1150 m ³ /h
Fan	Axial fan	Axial fan
Nominal heat load max.	23.4 kW	34 kW
Nominal heat output	19.6 kW	32 kW
Temperature increase ΔT ¹⁾	95 °C	70 °C
Oil consumption max.	2.23 l/h	3.25 l/h
Tank capacity	42 l	42 l
Air transportation hose connection ²⁾	-	ø 1 x 300 mm
Chimney connection	ø 120 mm	ø 150 mm
Thermostat connection	series	series
Combustion	indirect	indirect
Nozzle	0.40-80° S (gal/h)	0.60-80° S (gal/h)
Sound pressure level (at distance of 1 m)	70 dB (A)	75 dB (A)
Length	1075 mm	1215 mm
Width	440 mm	440 mm
Height	615 mm	670 mm
Weight	40 kg	48 kg

¹⁾ indicates the temperature increase. ΔT + ambient temperature = exhaust air temperature

²⁾ optional

Fuels

The following fuels have been approved for use with the oil heating unit IDS 20 and/or IDS 30: heating oil EL, diesel

7. Proper and improper use

Proper use

The oil heating unit IDS 20 and/or IDS 30 has been developed for the generation of hot air and may only be used indoors.

The device can be used for heating large rooms such as storerooms, workshops, building sites, greenhouses and cowsheds. It has been designed for stationary operation without frequently changing locations. The oil heating unit IDS 30 can be used in conjunction with an air transportation hose.

Any application deviating from the above-mentioned use is deemed inadmissible!

Improper use

The device may not be installed or operated in potentially inflammable and explosive rooms or areas.

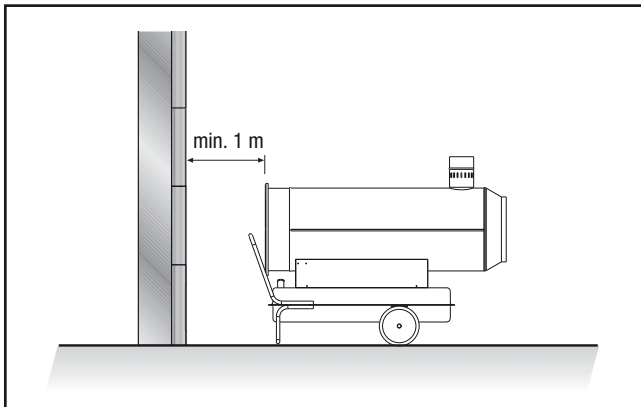
The device may not be used in rooms with an insufficient supply of combustion air.

8. Installation conditions

When choosing the installation location of the oil heating unit, a number of spatial and technical conditions must be taken into account. Any non-compliance may impair the functioning of the device and/or of the accessories or result in hazardous situations for people and property.

The following points are to be observed during installation:

- The device may only be used indoors
- The device must be installed in a stable position and placed on a fireproof surface
- The device must be installed near a chimney or external wall
- The device must be connected to a properly secured mains socket
- The installation room of the device must be sufficiently ventilated
- The minimum distance of the intake opening of the device to the wall must be at least 1 m (see figure)

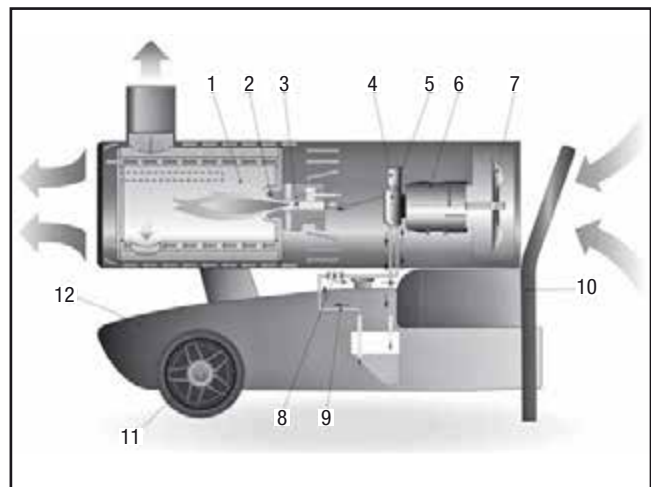


- The minimum distance of the device to inflammable materials must be at least 3 m
- The intake and exhaust openings must not be covered
- There may be no walls or large objects near the device
- A sufficient number of fire-extinguishing systems must be available

9. Description of device

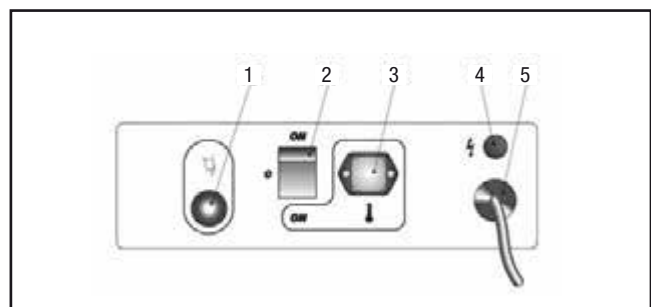
The oil heating unit IDS 20 and/or IDS 30 consists of the following components:

Oil heating unit



- | | |
|----------------------|-----------------------|
| 1 Combustion chamber | 7 Fan |
| 2 Burner | 8 Heating oil filter |
| 3 Nozzle | 9 Heating oil circuit |
| 4 Solenoid valve | 10 Support/handle |
| 5 Pump | 11 Wheel |
| 6 Motor | 12 Tank |

Control panel



- | | |
|------------------------------------|----------------------|
| 1 Reset button with indicator lamp | 4 Lamp |
| 2 Selector switch | 5 Power supply cable |
| 3 Thermostat socket | |

10. Installation and commissioning

- Check that the scope of delivery of your oil heating unit is complete. If an accessory part is missing, please contact the Trotec customer service or the specialist dealer from whom you purchased the device.
- Check the oil heating unit and its connection parts for possible damages.
- Mount the support/the handle and the wheels to the oil heating unit. Please refer to the supplied assembly instruction manual for further information. Please use the supplied assembly tools.
- Make sure to comply with the requirements described in the chapter „Installation conditions“.
- Correctly connect the exhaust system of the device to a chimney or an external wall as shown in the chapter „Exhaust system“.
- Fill the heating oil into the tank with the device switched off and cooled down.
- Inspect the device prior to commissioning and check it regularly for its proper condition during operation.
- Make sure that the characteristics of the mains supply correspond to those indicated on the rating plate.
- Each time before switching on the device, make sure that the fan can move freely before plugging the power plug into the mains socket.
- Connect the power supply cable to a properly secured mains socket (230 V / 50 Hz / 10 A). On construction sites, a residual current circuit breaker must be connected upstream of the mains socket according to VDE 0100/0105.

The oil heating unit is now ready for operation. Use the device according to the functions described in chapter 12 „Functions and operation“.

11. Exhaust system

- Before planning the installation of the exhaust system, the local chimney sweep must be informed according to DIN 18160.



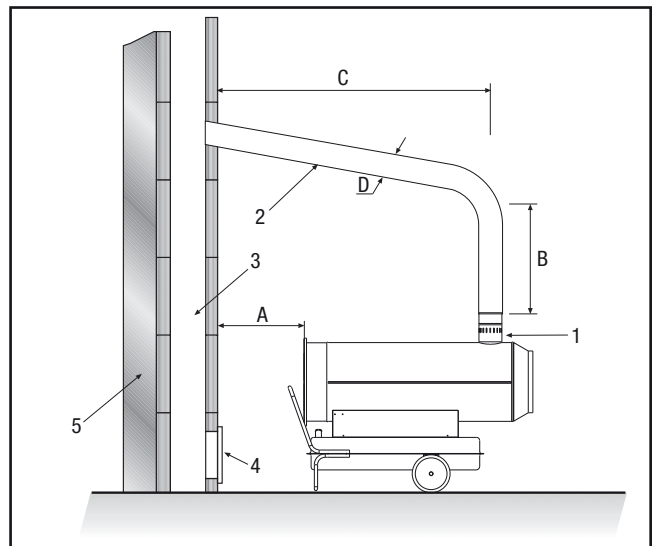
Risk of injury due to intoxication!

Improper installation of the exhaust system may cause health problems.

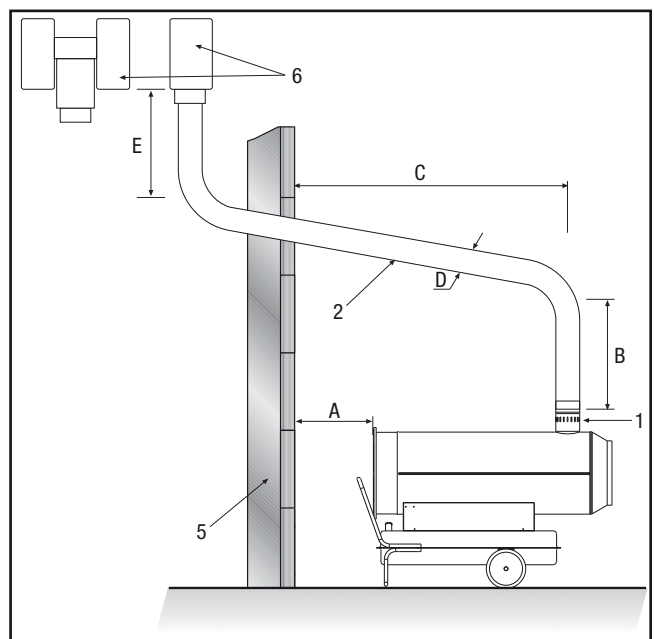
Have the installation carried out by a specialised craftsman!

- Make sure that an unobstructed and sufficient supply of combustion air (e. g. by means of ventilation openings in doors, ceilings, windows, walls or an ambient air network) is provided.
- Have the exhaust gas values of the burner checked regularly.

Chimney duct



Wall duct



- | | | | |
|---|----------------------|---|--|
| A | min. 1 m | 1 | Chimney connection |
| B | min. 1 m | 2 | Wall duct with pipe elbow min. 5° |
| C | as short as possible | 3 | Chimney - min. internal dimensions 20x20 cm |
| D | ≥ ø 120 mm/150 mm | 4 | Opening for cleaning with explosion protection cap |
| E | min. 1 m | 5 | External wall |
| | | 6 | Draft reinforcement, H-shaped |

12. Functions and operation

The device may only be used by persons who have been trained in operating the device.

Switching on the oil heating unit

The oil heating unit features two operating modes:

1. Manual mode

The generator can operate in manual mode.

- Switch the device on by setting the selector switch to the position „ON“ (continuous operation).

2. Automatic mode

The oil heating unit can only operate in automatic mode if a control device (optional) is connected to it, e.g. a thermostat. The thermostat is to be connected to the thermostat socket.

- Switch the device on by setting the selector switch to the position „ON“ +  (thermostat operation).

If the start-up cycle has been completed, the electronic control unit will confirm that the start-up of the device is complete by activating a red flashing light on the reset button.

Switching off the oil heating unit

- Switch the device off by setting the selector switch to the position „0“.
- If you are using a thermostat, switch the device off via the settings of the control device (e.g. by setting the thermostat to a low temperature).

The flame is extinguished and the fan will continue running for approx. 90 seconds in order to cool down the burner.



Damage to the device due to overheating!

Do not switch off the device by pulling out the power cord. This may cause the device to overheat.

Switch the device off properly. Only disconnect the power plug if the fan motor has come to a complete standstill.

- Wait until the automatic aftercooling has been completed.
- Secure the device against being accidentally switched on again by pulling out the power cord.

Resuming operation after a failure

During the initial commissioning of the device or after the heating oil circuit has been completely emptied, the inflow of heating oil to the nozzle may be insufficient. This will cause the flame control system to be activated and the device will be blocked.

- Wait for approx. 1 minute.
- Press the reset button for approx. 5 seconds.
- Switch on the device.

If the device is still not starting up:

- Make sure that there is enough heating oil in the tank.
- Press the reset button.

In order to determine the cause of the fault:

- see the chapters „Safety equipment“ and „Troubleshooting“

Safety equipment

The oil heating unit features an electronic flame and maximum temperature monitoring system that uses a photoelectric cell and a safety thermostat.

The electronic control unit controls the start-up, shutdown and safety shutdown times in the event of malfunctions. The control unit is equipped with a reset button whose colour (operation indicator) is depending on the operating mode:

- switched off if the device is in pause or standby mode and expecting the heating demand
- continuous green light for normal operation of the device

- continuous red light for safety shutdown of the device
- flashing orange light if the the operation is interrupted due to considerable mains fluctuations ($T < 175 \text{ V}$ or $T > 265 \text{ V}$); the operation is automatically resumed if the voltage has stabilised in the range of 190 V to 250 V

If the device has triggered the safety shutdown:

- Press and hold down the reset button for 3 seconds in order to resume operation.



Risk of injury due to deflagration!

Unburned heating oil may accumulate in the combustion chamber and can be ignited when the device is switched on the next time.

Do not restart the device two times in a row.

If the safety shutdown is still activated:

- Determine and remove the cause of the fault before commissioning the oil heating unit again (see chapter „Troubleshooting“).
- Press and hold the reset button for at least 5 seconds.

The self-diagnostic programme will start. Once the programme has been completed, the reset button will light up in the colour (self-diagnostic indicator) depending on the cause of the fault:

- flashing orange light if an incorrect flame has been detected during start-up
- flashing red light if a missing flame has been detected during start-up
- flashing red/green light if a missing flame has been detected during operation
- continuous orange light if an internal error of the electronic control device has occurred

In order to determine the cause of the fault:

- see chapter „Troubleshooting“

13. Transport

- Switch the device off as described in the chapter „Functions and operation“.
- Wait until the device has cooled down completely.
- Before transporting or adjusting the device, check if the tank cap is tightly closed.



Risk of environmental pollution!

Heating oil may leak during transport or handling of the device. The filling plug of the tank cap does not guarantee tightness in order to allow air to be introduced and the tank to be emptied during operation.

Only transport or shift the device with the tank cap tightly closed.

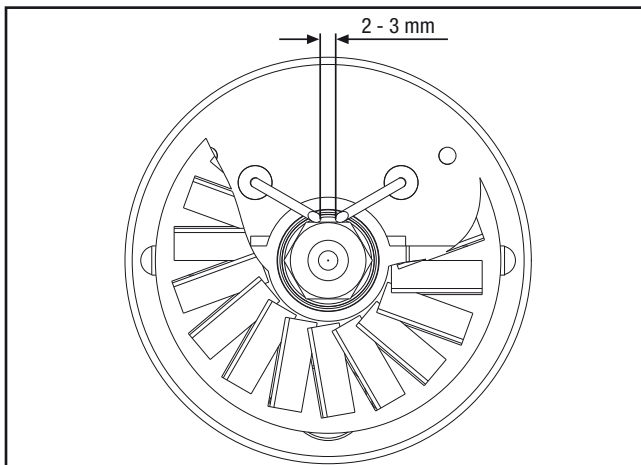
14. Care and maintenance

In order to ensure a trouble-free operation of the device, the combustion chamber, the burner and the fan are to be cleaned regularly.

- Switch the device off as described in the chapter „Functions and operation“.
- Wait until the device has cooled down completely.

Cleaning after every 50 operating hours

- Dismount the heating oil filter. Remove the filter insert and clean it using clean heating oil.
- Dismount the upper housing part and clean the inner part as well as the fan blades using a cleaning fleece and a brass brush if it is heavily soiled.
- Check the condition of all cables and high-voltage connections.
- Dismount the burner and clean its components using a brass brush.
- Clean the electrodes. Check the distance of the electrodes and adjust it if required (see figure).



- Have the combustion chamber cleaned by the customer service.
- Mount the components in the reverse order.

Cleaning the oil heating unit

- Wipe the exterior of the device using a wet cloth. The painted and plastic surfaces may not be scoured. Do not use any solvent-based cleaning agents.

15. Disposal

The heating oil must be drained from the tank of the oil heating unit and collected.

Oil heating unit

Electronic equipment may not be disposed of in the domestic waste, but must be correctly disposed of in accordance with the EUROPEAN PARLIAMENT directive 2002/96/EC of 27th January 2003 regarding used electrical and electronic equipment. Please dispose of this device according to the applicable legal regulations after its final decommissioning.

Heating oil

Fuels must be disposed of according to the local regulations.

Packaging

The packaging of the oil heating unit consists of cardboard/paper and plastic. The materials must be disposed of in the designated containers according to the local regulations or at a recycling depot.

16. Service and repair

Before contacting our customer service in order to solve an existing technical problem, please try removing the error by following the instructions described in the chapter „Troubleshooting“.

If you have any further questions regarding the functioning and operation of the oil cleaning unit or if you wish to receive further information in the event of a claim or with regard to guarantee aspects, please do not hesitate to contact us at any time.

Please contact:

Trotec GmbH Co KG
 Grebbener Straße 7
 D-52525 Heinsberg
 Tel.: 49 (0) 2452 / 962 - 400
 Fax.: 49 (0) 2452 / 962 - 200
 Email: info@trotec.de
 www.trotec.de.

17. Troubleshooting



Danger to life due to improper repair!

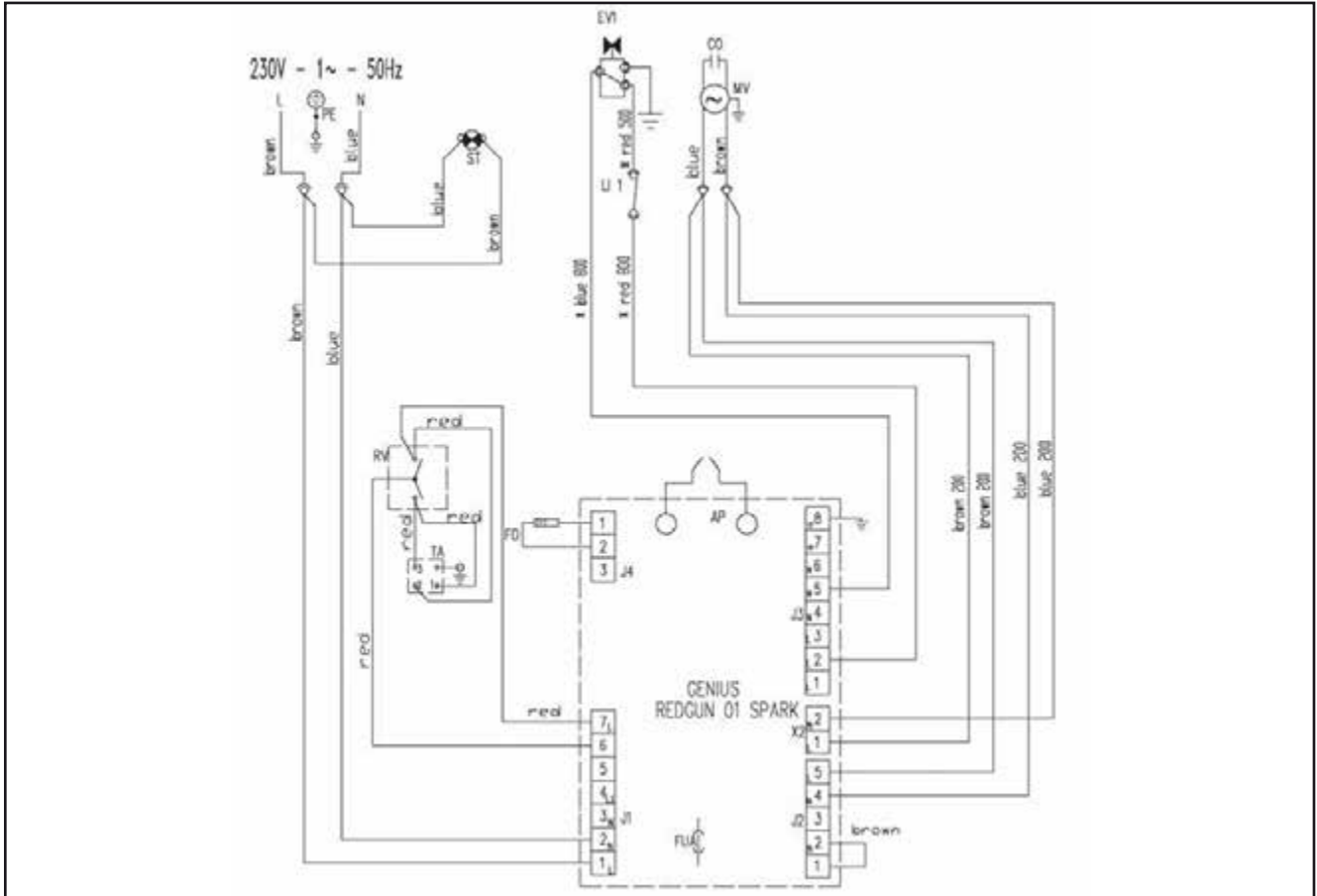
Do not attempt to carry out modifications or repairs on the device. Any unauthorised modification may result in serious injuries or even death. Have repairs carried out by a certified specialist workshop.

Problem	Reset button		Cause	Error correction
	Operation indicator	Self-diagnostic indicator		
Fan does not start running and flame is not ignited	switched off	-	Control device is incorrectly set	- Check if the control equipment is correctly set (e.g. the temperature set at the thermostat must be higher than the room temperature).
			Control device defective	- Have the control device replaced by the customer service.
Fan does not start running or switches off during start-up or operation	flashing orange light	-	no power supply	- Check the characteristics of the electrical system (230 V -1~ - 50 Hz). - Check the function and position of the selector switch. - Check if the fuse is intact.
			Voltage < 175 V	- Check the supply voltage. The device will automatically restart if the voltage exceeds 190 V.
			Voltage > 265 V	- Check the supply voltage. The device will automatically restart if the voltage falls below 250 V.
Fan switches off during start-up or operation	continuous red light	flashing orange light	Flame is present prior to the ignition of the transformer	- Contact the customer service and have the device cleaned and heating oil residues removed from the combustion chamber.
			Photoelectric cell defective	- Have the photoelectric cell replaced by the customer service.
		flashing red light or flashing red/green light	Motor winding interrupted or blown	- Have the motor replaced by the customer service.
			Motor bearing blocked	- Have the motor bearing replaced by the customer service.
			Motor capacitor blown	- Have the motor capacitor replaced by the customer service.
		no ignition	- Check the connections of the ignition cables to the electrodes and the transformer. - Check the position and the distance of the electrodes. - Check if the electrodes are clean. - Have the transformer replaced by the customer service.	
		Flame control system defective	- Have the flame control equipment replaced by the customer service.	
		Photoelectric cell defective	- Have the photoelectric cell cleaned or replaced by the customer service.	
Burner is not or only insufficiently supplied with heating oil	Contact the customer service in order to: - have the integrity of the coupling between the pump and motor checked. - have the heating oil circuit checked for air that may have entered the circuit and to have the tightness of the lines and filter seal checked. - have the nozzle cleaned or replaced.			

Problem	Reset button		Cause	Error correction
	Operation indicator	Self-diagnostic indicator		
			Solenoid valve defective	Contact the customer service in order to: <ul style="list-style-type: none"> - have the electrical connections checked. - have the safety thermostat LI checked. - have the solenoid valve cleaned or replaced.
		continuous orange light	Internal error of the electronic control unit	Contact the customer service in order to: <ul style="list-style-type: none"> - have the control unit reset; try to start-up the device at least twice. If the fault still occurs afterwards, replace the control unit.
Fan starts running and flame burns with smoke formation	continuous green light	-	insufficient supply of combustion air	- Remove all obstacles or blockages from the intake and/or exhaust openings. - Have the position of the air setting ring checked by the customer service. - Have the support disc of the burner cleaned by the customer service
			Supply of combustion air too high	- Have the position of the air setting ring checked by the customer service.
			used heating oil contaminated and/or containing water	- Replace used heating oil with clean heating oil. - Clean the heating oil filter.
			air has entered the heating oil circuit	- Have the tightness of the lines and heating oil filter checked by the customer service
			insufficient heating oil quantity at the burner	Contact the customer service in order to: <ul style="list-style-type: none"> - have the pump pressure value checked. - have the nozzle cleaned or replaced.
			too much heating oil at the burner	Contact the customer service in order to: <ul style="list-style-type: none"> - have the pump pressure value checked. - have the nozzle replaced.
Device does not switch off	continuous green light	-	Solenoid valve seal defective	- Have the solenoid valve replaced by the customer service.

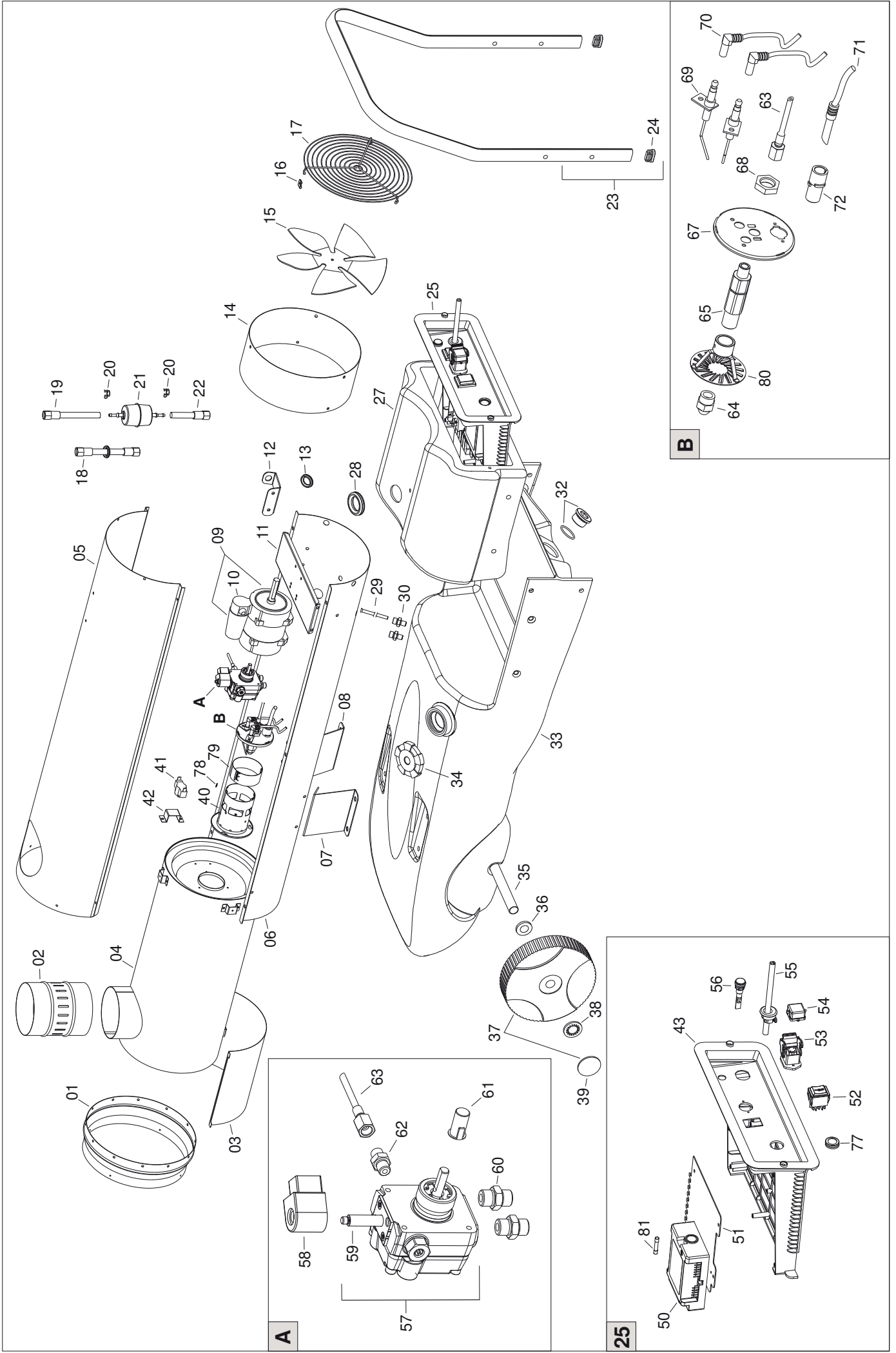
18. Appendix

Circuit diagram



AP Control unit
 TA Thermostat connection
 ST Indicator lamp
 LI 1 Safety thermostat
 EV 1 Solenoid valve

FO Photoelectric cell
 CO Capacitor
 MV Fan motor
 FUA Fuse 3.15 A
 RV Selector switch



PL 07/11		Da N.° serie	De No. Serie	20711001	Von Masch. Nr.	From S/N
POS	P/N	LEGENDA	DESCRIZIONE	DESCRIPTION	BESCHREIBUNG	DESCRIPTION
01	G06075-1006	-	Cono diffusore	Embout conique	Ausblaskonus	Outlet cone
02	G06077	Ø 150	Raccordo camino	Raccord cheminée	Schornsteinanschluss	Chimney fitting
03	G06079	-	Pannello isolante	Panneau d'isolation	Isolierplatte	Insulating panel
04	G06301	-	Camera di combustione	Chambre de combustion	Brennkammer	Combustion chamber
05	G06300-1006	-	Carrozzeria superiore	Carrosserie sup.	Karosserie Oberteil	Upper body
06	G06271-1006	-	Carrozzeria inferiore	Carrosserie inf.	Karosserie Unterteil	Lower body
07	G06065-9005	SX	Staffa supporto carrozzeria	Étrier support carrosserie	Trägerbügel Karosserie	Chassis support bracket
08	G06088-9005	DX	Staffa supporto carrozzeria	Étrier support carrosserie	Trägerbügel Karosserie	Chassis support bracket
09	E10692	200 W - 230V - 50Hz	Motore	Moteur	Motor	Motor
10	E11246	6,3 µF	Condensatore	Condensateur	Kondensator	Capacitor
11	G06217	-	Staffa supporto motore	Étrier support moteur	Trägerbügel Motor	Motor support bracket
12	G06068-9005	-	Supporto cavo elettrico	Crochet câble d'alimentation	Halterung Stromkabel	Power cord support
13	C30352	Ø 15mm - Ø22 mm	Passacavo	Protection cable	Kabeldurchgang	Cable protection
14	G06070-1006	-	Convogliatore aria	Air collecteur	Luftkollektor	Air conveyor
15	T10207	Ø 300 18°	Ventola	Ventilateur	Lüfter	Fan
16	M20412	U42-182 B	Piastrina serraggio	Plaque serrage	Anzugsscheibe	Lock plate
17	P30165	-	Griglia aspirazione	Grille aspiration	Ansauggitter	Inlet grill
18	I40328	L = 300mm - 1/4" FF	Tubo gasolio flessibile	Flexible fuel	Flexibler Heizölschlauch	Flex diesel pipe
19	I40327	L = 180mm - 1/4" FF	Tubo gasolio flessibile	Flexible fuel	Flexibler Heizölschlauch	Flex diesel pipe
20	C30729	Ø12,5 - 14,5/6 CLIC120	Fascetta	Bande	Schelle	Clip
21	I30414	Ø6 - Ø8	Filtro	Filtre	Filter	Filter
22	I40326	L = 85mm - 1/4" FF	Tubo gasolio flessibile	Flexible fuel	Flexibler Heizölschlauch	Flex diesel pipe
23	P20173-9005	-	Maniglia	Poignée	Griff	Handle
24	C30361	15x30	Tappo copritubo	Bouchon tuyau	Schlauchstöpsel	Pipe cap
25	G00309	-	Quadro elettrico	Coffret électrique	Schaltkasten	El. control box
27	P50129	-	Copertura quadro elettrico	Couverture coffret électrique	Abdeckung Schalttafel	Control box cover
28	C30372	Ø 25,4mm - Ø34,9 mm	Passacavo	Protection cable	Kabeldurchgang	Cable protection
29	I30696	L = 220mm	Pescante	Tuyau d'aspiration	Ansaugrohr	Suction pipe
30	I30737	1/4" M - M12x1,75 M	Raccordo ottone	Raccord laiton	Messingfitting	Brass fitting
32	C30380	M30x1,5	Tappo scarico serbatoio	Bouchon de vidange réservoir	Behälterablassstopfen	Drain cap
33	P50130	42 l	Serbatoio gasolio	Réservoir fuel	Heizölbehälter	Fuel tank
34	C30356	Ø 76	Tappo serbatoio	Bouchon réservoir	Behälterstopfen	Tank cap
35	P20179-9005	Ø 20	Assale	Esseu	Achse	Wheel axle
36	M20110	Ø21 x Ø37 x 3	Rondella	Rondelle	Unterlegscheibe	Washer
37	C10543	Ø 200 - Ø 20,5	Ruota	Roue	Rad	Wheel
38	M20203	Ø 20	Rondella elastica	Clips de fixation	Sprengring	Elastic washer
39	C10513-N	Ø 200 - 250	Copriruota nero	Couvre roue noire	Radabdeckung schwarz	Black wheel cover
40	G06181	-	Boccaglio	Gueulard	Brennerrohr	Blast tube
41	E50109	-	Termostato di sicurezza	Thermostat de sécurité	Sichereitsthermostat	Safety thermostat
42	G06221	-	Staffa supporto termostato	Bride de fixation thermostat	Trägerbügel Thermostat	Thermostat support bracket
43	G06153	-	Pannello quadro elettrico	Panneau du coffret électrique	Schaltkastenplatte	El. control box panel
50	E40128	REDGUND1 - 230V	Apparecchiatura controllo fiamma	Disp. Contrôle flamme	Flammenüberwachung	Flame control box
51	G06184	-	Piastra supporto	Plaque support	Montageplatte	Support plate
52	E10102-P	I - 0 - II	Interruttore bipolare	Interrupteur	zweipoliger Schalter	Switch

PL 07/11		Da N.° serie	De No. Serie	Von Masch. Nr.	From S/N	
		20711001				
POS	P/N	LEGENDA	DESCRIZIONE	DESCRIPTION	BESCHREIBUNG	DESCRIPTION
53	E20640	3P+T	Connettore presa	Fiche thermostat	Steckdose	Thermostat plug
54	E20665	-	Coperchio presa termostato	Couvercle prise thermostat	Deckel Thermostatabuchse	Thermostat plug cover
55	E30448	L = 1,5m - SCHUKO	Cavo alimentazione elettrica	Câble d'alimentation	Stromversorgungskabel	Power cord
56	E11030	230V	Lampada	Lampe	Lampe	Lamp
57	T20456	SUNTEC CSV 30	Pompa gasolio	Pompe fuel	Heizölpumpe	Diesel pump
58	T20458	SUNTEC CSV 30 - 230 V	Bobina elettrovalvola	Bobine E. V.	Spule Magnetventil	Solenoid coil
59	T20461	SUNTEC CSV	Corpo elettrovalvola	Corps électrovalve	Magnetventilgehäuse	Solenoid valve body
60	I20104	1/4" M - 1/4" M	Raccordo ferro	Raccord fer	Anschluss, Eisen	Iron fitting
61	E10698	SMEL	Giunto motore - pompa	Accouplement moteur-pompe	Motor/Pumpe-Kupplung	Motor-pump coupling
62	I20115	1/8" M - 1/8" M	Raccordo ferro	Raccord fer	Anschluss, Eisen	Iron fitting
63	I40192	L = 250mm 1/8" F - 1/8" F	Microtubo	Microtube	Feinschlauch	Micropipe
64	T20361	DE LAVAN 0.55 GPH 80° W	Ugello gasolio	Gicleur	Düse	Nozzle
65	I33007	-	Raccordo portaugello	Support gicleur	Düsenhalter	Nozzle support
67	G06228	-	Disco supporto bruciatore	Bride brûleur	Trägerscheibe Brenner	Burner support disc
68	I31034	M14	Controdado ottone	Contre-écrou laiton	Kontermutter, Messing	Brass lock nut
69	E10248	-	Elettrodo accensione	Électrode allumage	Zündelektrode	Ignition electrode
70	G02078	L = 1000 mm	Cavo alta tensione	Conn. câble	Hochspannungskabel	H.T. Cable connect.
71	E40131	GENIUS - L = 1 m	Foto cellula	Photocell.	Fotozelle	Photocell
72	E50327	-	Supporto fotoresistenza	Support photorésistance	Halterung Photowiderstand	Photoresistor support
77	E20418	-	Protezione pulsante blocco	Protection bouton d'arrêt	Schutz Sperrschalter	Stop button protection
78	E20671	6,3x0,8 mm	Morsetiera	Barrette de connexion	Klemmenleiste	Terminal board
79	G06183	-	Serranda regolazione aria	Tablier réglage air	Luftregelklappe	Air adjustment shutter
80	G01077	-	Anello diffusore	Diffusaire annulaire	Stauscheibe	Diffuser ring
81	E10303	5x20 - 10A - T	Fusibile	Fusible	Sicherung	Fuse



DICHIARAZIONE DI CONFORMITÀ CE
CE - KONFORMITÄTSERKLÄRUNG
DECLARACION CE DE CONFORMIDAD
CE - OVERENSSTEMMELSESATTEST
CE - VAATIMUSTENMUKAISUUDEN VAHVISTUS

Δήλωση ομοιότητας CE
ДЕКЛАРАЦИЯ СООТВЕТСТВИЯ CE

DECLARATION DE CONFORMITE CE
CE DECLARATION OF CONFORMITY
DECLARAÇÃO CE DE CONFORMIDADE
CE - ÖVERENSSTÄMNINGSINTYG
VERKLARING VAN CONFORMITEIT CE
CE ДЕКЛАРАЦИЯ ЗА СЪОТВЕТСТВИЕ

La sottoscritta - La société - Der/die Unterzeichnende - We - La suscrita - A abaixo assinada
Firmaet - Undertecknad firma - Yritys - Ondergetekende - Ηπολογεγραμμενη - Долуподписаната - Компания

TROTEC® GmbH & Co. KG

Grebber Straße 7
D-52525 Heinsberg

Dichiara sotto la propria responsabilità che la macchina nuova:
Erklärt unter eigener Verantwortung, daß die neue Maschine:
Declara sobre la propia responsabilidad que la máquina nueva:
Attester herved på eget ansvar, at den nye maskine:
Vahvistaa täten omavastuisesti, että sen toimittama ja oheisissa käyttööhjeissa tarkemmin esittelemä uusi kone:
Verklaart onder eigen verantwoordelijkheid dat de nieuwe machine:
Декларира на собствена отговорност, че новата машина

Déclare sous la propre responsabilité que la nouvelle machine:
Declare under our sole responsibility that the new machine:
Declara sob a propria responsabilidade que a máquina nova:
Intygar på eget ansvar, att den nya maskinen:
δηλώνει κάτω από τη δικιά της ευθύνη ότι η καινούργια μηχανή
Со всей ответственностью заявляет, что новое оборудование:

Modello - Modèle - Modell - Make - Modelo - Modelo
Model - Modell - Malli - Model - πρωτοτυπο - Модел - Модели

GENERATORE D'ARIA CALDA - GÈNÈRATEUR D'AIR CHAUD
WARMLUFTERHITZER MODELL - SPACE HEATER
GENERADOR DE AIRE CALIENTE - НАГРЕВАТЕЛЬ ВОЗДУХА

Tipo - Type - Typ - Type - Tipo - Tipo
Type - Typ - Τυπος - Type - εισος - Тип - Типа

IDS 20 / IDS 30 / IDS 45 / IDS 80 / IDS 100

è conforme ai requisiti essenziali di sicurezza indicati dalle **Direttive 2006/42/CE, 2006/95/CE, 2004/108/CE.**

est conforme aux exigences essentielles de sécurité reprises dans le **Directives 2006/42/CE, 2006/95/CE, 2004/108/CE.**

auf die sich diese Erklärung bezieht, die Anforderungen des **Richtlinie 2006/42/CE, 2006/95/CE, 2004/108/CE.**

to which this declaration relates, conforms to the provision of **Directives 2006/42/CE 2006/95/CE, 2004/108/CE.**

es conforme con la **Directiva 2006/42/CE, 2006/95/CE, 2004/108/CE.**

està conforme a **Directiva 2006/42/CE, 2006/95/CE, 2004/108/CE.**

er i overensstemmelse med gældende lov, der har indført **Direktivet 2006/42/CE, 2006/95/CE, 2004/108/CE.**

överensstämmer med de lagar, som antagit **Direktivet 2006/42/CE, 2006/95/CE, 2004/108/CE.**

EU: n koneita koskevan **Direktiivin 2006/42/CE, 2006/95/CE, 2004/108/CE.**

conform de wettelijke beschikkingen is, die de richtlijnen **Betreffende 2006/42/CE, 2006/95/CE, 2004/108/CE.**

περιγραμμενη στις συνημμενες οδηγιες χρησεως ειναι συμφωνη με τις νομικες διαταξεις που αναφερονται στη **Διευθυνσ 2006/42/CE, 2006/95/CE, 2004/108/CE.**

е в съответствие с основните изисквания за безопасност, посочени в **Директиви 2006/42/EO, 2006/95/EO, 2004/108/EO.**

к которому относится данная декларация, подтверждает соответствие требованиям **Регламентов 2006/42/CE, 2006/95/CE, 2004/108/CE.**

Heinsberg, 07. 11. 2011

Geschäftsführer: Detlef von der Lieck

TROTEC® GmbH & Co. KG

Grebber Straße 7 • D-52525 Heinsberg • Tel.: +49 2452 962-400 • Fax: +49 2452 962-200

E-Mail: info@trotec.de • www.trotec.de

Geschäftsführer: Detlef von der Lieck • Komplementär: von der Lieck Verwaltungs GmbH • Amtsgericht Aachen HRA 5232

Trotec GmbH & Co. KG

Grebener Str. 7
D-52525 Heinsberg

☎ +49 2452 962-400

☎ +49 2452 962-200

info@trotec.com

www.trotec.com